

First Announcement and Call for Abstracts



THE 4TH INTERNATIONAL CONGRESS OF ASIAN
SOCIETY OF TOXICOLOGY
(ASIATOX-IV)

June 18 - 21, 2006

Zhuhai, China

Environment safety and Human health,
the challenges to toxicologists

Organizer

Chinese Society of Toxicology
Asian Society of Toxicology

Assistant Organizer

Guangdong Center of Disease Control and Prevention
Beijing Ke Hai Zhi Bin International Conference and Exhibition Service Co., LTD

Website: www.zlnic.com/wz/sslt; www.chntox.org; www.bjkhzb.com

WELCOME MESSAGE

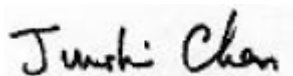
Dear Colleagues,

On behalf of the Congress Organizing Committee, the Chinese Society of Toxicology (CST) and Asian Society of Toxicology, I am most pleased to invite all scientists interested in various fields of toxicology and related sciences to attend the 4th International Congress of Asian Society of Toxicology (ASIATOX-IV) to be held from June 18-21, 2006, at the International Conference Center Hotel in Zhuhai, Guangdong province, China. We are certain that your participation will contribute to the success of this important congress.

The main subject of this Congress is to provide a forum for discussing the toxicological problems of environment safety and human health, and exchanging the views with the toxicologists from all over the world, especially from Asian region.

As the host of ASIATOX-IV, we choose Zhuhai as the meeting venue. Zhuhai, a romantic name meaning "Pearl Sea" with beauty beaches and glorious sunshine, is situated at the mouth of the famous Zhujiang (Pearl River) where river and ocean meet. Zhuhai is called a luxurious garden paradise where colorful flowers bloom all year long, and it is neighboring the cities of Shenzhen, Hong Kong and Macau, all within easy reach. In 1999, Zhuhai was honored as The International Award for Most Improved Living Environment by the United Nations. When entering Zhuhai, you step into a world of beauty and romance. We do hope it will make your staying comfortable and enjoyable and will contribute to the friendship and cooperation among the delegates from all over the world.

We are looking forward to welcoming you in Zhuhai, China in June of 2006!



Prof. Jun-Shi Chen
President, ASIATOX
President, Organization of ASIATOX-IV

ORGANIZATION

Organization of Congress

President: Jun-Shi Chen (CST)
Vice President: Jou-Fang Deng (TSTA) Hitoshi Endou (JST)
Secretary General: Ping-Kun Zhou (CST)

International Advisory Committee

Chairman: Jun-Shi Chen (CST)

Members:

Haiwon Chung (KST)	Tsung-Yun Liu (TSTA)
Malyn Chulasiri (TST)	Taku Nagao (JST)
Jou-Fang Deng (TSTA)	Sumol Pravitranon (TST)
Kunio Doi (JST)	Tetsuo Satoh (ASIATOX advisor)
Hitoshi Endou (JST)	Jun-ichi Sawada (JST)
Sang-Seop Han (KST)	Songsak Srianujata (TST)
Wallace Hayes (IUTOX)	Chiharu Tohyama (JST)
Ikuo Horii (JST)	Xin-Ru Wang (CST)
Tetsuya Kamataki (JST)	Yasushi Yamazoe (JST)
Ali Esat Karakaya (IUTOX)	IlJe Yu (KST)
YoungChul Kim (KST)	Ping-Kun Zhou (CST)
Hoonjeong Kwon (KST)	Zhi-Xiong Zhuang (CST)

International Scientific Program Committee

Chairman: Jun-Shi Chen (CST)

Secretary General: Ping-Kun Zhou (CST)

Members:

Ying Chen (CST)	Sang-Seop Han (KST)	Ikuo Horii (JST)
Gui-Bin Jiang (CST)	Hoonjeong Kwon (KST)	Tsung-Yun Liu (TSTA)
Sarisak Soontornchai (TST)	Kou Yamazoe (JST)	Tetsuo Satoh (ASIATOX advisor)

Local Organizing Subcommittee

Chairman: Zhi-Xiong Zhuang

Vice Chairman: Ming-Yang Liao Wei Meng Zhi-cheng Shi
Xin-Ru Wang Jie Wang

Secretary General: Chi Han

Vice secretary General: Zu-Yue Sun Xing-Fen Yang Ying Chen

Members: Li-Ya Cao Ri-Gao Ding Ying-Xin Gao
Gui-Bin Jiang Gui-Lan Li Lin Lu
Wei-Dong Luo Ying-Wa Sheng Xiao-Ou Su
Mai-Kun Teng Zhi-Xiang Yang Yi-Ming Wu
Tian-Bao Zhang Miao-Xiang Zhu

Subcommittees Chairpersons:

Scientific Subcommittee:	Gui-Bin Jiang	Zu-Yue Sun
Financial Subcommittee:	Ming-Yang Liao	Hong-Yu Song
Social Program Subcommittee:	Xing-Fen Yang	Jing-Zhou Zhang
Registration Subcommittee:	Jing-Rong Peng	Tian-En Wang
Publication Subcommittee:	Ying Chen	Hong Qiao

CONGRESS INFORMATION

Dates and Venue

The 4th International Congress of Asian Society of Toxicology (ASIATOX-IV) will be held from June 18 – 21, 2006 in the International Conference Centre Hotel, Zhuhai, Guangdong province, China.

Address: Jida Middle Lover's Avenue, Zhuhai, Guangdong province, China.

Postcode: 519015

Tel: +86-756-3329988;

Fax: +86-756-3221966; **Website:** www.cnicc.com

Language

Official Language will be English.

PCO / PEO

The PCO (professional congress organizer) and PEO (professional exhibition organizer) is Beijing Ke Hai Zhi Bin International Conference and Exhibition Service Co., LTD

Meeting Facilitie

Computer projectors for PowerPoints presentation will be available in all meeting rooms.

Posters

The size of the poster should be 1 meter wide by 1.2 meters high. The presenting authors will be notified of the time and location for the poster at the Congress. The poster mounting time and removal time will be informed.

Exhibition

An exhibition is going to be held concurrently with the Congress at the same venue. Research institutes, medical and instruments companies, publishing companies and industrial enterprises are welcome to contact Beijing Ke Hai Zhi Bin International Conference and Exhibition Service Co., LTD for detailed information.

Address: Room 201, Building6, HuiMinYuan, TongHuiJiaYuan, SiHui East, ChaoYang District, Beijing, P. R. China. **Postcode:** 100025

Phone: +86-10-65582912; **Fax:** +86-10-65582913

Website: www.bjkhzb.com E_mail: khzb0526@yahoo.com.cn

THEMES AND TOPICS

Theme

Environment safety and Human health, the challenges to toxicologists

Topics

- | | |
|---|---|
| 1) New Approches in Risk Assessment of Drug and Food (W2) | 9) Natural Toxins |
| 2) Pharmacology and Toxicology of Herbs (S) | 10) Environment Pollution and Health (S) |
| 3) Genetic Susceptibility of Drug Toxicity and Pollutants (S) | 11) Metal Toxicity (S) |
| 4) Toxicogenomics, Proteomics and Metabonomics (W1) | 12) Biomarkers and Environmental Toxicology (S) |
| 5) Genotoxicology and gene expression regulation | 13) Immunotoxicology (W3) |
| 6) Oxidative Stress and DNA Damage Response (S) | 14) Regulatory Toxicology |
| 7) Molecular Targets of Toxicity and Protection | 15) Occupational Toxicology |
| 8) Mechanisms of Environmental Factors Carcinogenesis | 16) Reproductive and Developmental Toxicology |
| | 17) Clinical Toxicology, Poisoning and Treatment (W4) |
| | 18) Roundtable discussion: Education in Toxicology |

Note: (W): workshop sessions; (S): symposium sessions

OUTLINE OF THE CONGRESS PROGRAMME

Time	June 19, Monday	June 20, Tuesday	June 21, Wednesday
08:30-09:00		Keynote Lecture 2	Keynote Lecture 3
09:00-10:50	Opening Ceremony Keynote Lecture 1 Plenary Lecture 1	Plenary Lecture 2 - 4	Plenary Lecture 5-7
10:50-13:30	Poster Session 1	Poster Session 2	Closing Ceremony
12:00-13:20	Lunch	Lunch	Lunch
13:30-15:30	Workshop - W1 Symposium - S1 & S2	Workshop - W3 Symposium - S5 & S6	
15:45-17:45	Workshop - W2 Symposium - S3 & S4	Workshop - W4 Roundtable discussion (Education in Toxicology)	
18:00-19:30	Banquet	Dinner	
Note: June 18, Sunday, 08:30-21:00 –Registration; 18:00-20:00 - Welcoming Reception			

CONTINUING EDUCATION COURSES

Two continuing education courses will be held and open to all the congress participants at the same venue on June 18, Sunday, 2006.

CALL FOR ABSTRACTS

The Congress will include invited keynote lectures, plenary presentations, oral presentations in symposia and workshops, and poster displays. You are welcome to submit abstracts (**400 words in English**) for poster presentation before **April 10, 2006**. Confirmation for acceptance of abstracts will be notified by email before April 30, 2006. The abstracts will be published in the **Chinese Journal of Pharmacology and Toxicology** after peer review.

Submission of the Abstract

1. Please submit your abstract by email to: cjpt@nic.bmi.ac.cn and chntox@yahoo.com.cn
Please mark "Asiattox-4" in the email subject.
2. If your abstract arrives later than the deadline, we may not guarantee it would be included in the Abstract Book. The Abstract Book will only include those of which at least one of the authors will register to the Congress.
3. Please include Title, Authors by FAMILY name in capitals followed by Surname initials in capitals, Affiliation, Address and email address of the corresponding author before the text. The abstract text includes AIM, METHODS, RESULTS and CONCLUSION. Three to five keywords are needed.

REGISTRATION

Please complete the Registration Form and return it to Beijing Ke Hai Zhi Bin International Conference and Exhibition Service Co., LTD. *before May 10, 2006.*

Address: Room 201, Building6, HuiMinYuan, TongHuiJiaYuan, SiHui East, ChaoYang District, Beijing, P. R. China. **Postcode:** 100025

Phone: +86-10-65582912; **Fax:** +86-10-65582913; **Email:** khzb0526@yahoo.com.cn

Your Registration Form should be accompanied with relevant payment.

Registration Fees

Registration	Before May 10, 2006	After May 10, 2006
Participant	US\$350	US\$400
Student*	US\$180	US\$200
Accompanying Persons	US\$100	US\$150

*Please offer a certificate of student status (refer the Registration Form).

Entitlements of full registered participant:

1. Opening Ceremony and all Scientific Sessions
2. Exhibition
3. A volume of abstract and Congress kit
4. Coffee / Tea breaks
5. Welcome reception and Congress banquet
6. Congress Lunches and Dinner (June 20)

Entitlements of registered accompanying person:

1. Opening Ceremony
2. Welcome Reception
3. Congress banquet

Confirmation

Your registration, hotel and tour reservation and all payment will be confirmed in writing upon receipt of your Registration Form and payment. Please present the confirmation letter to the Registration Desk when registering during the Congress.

GENERAL INFORMATION

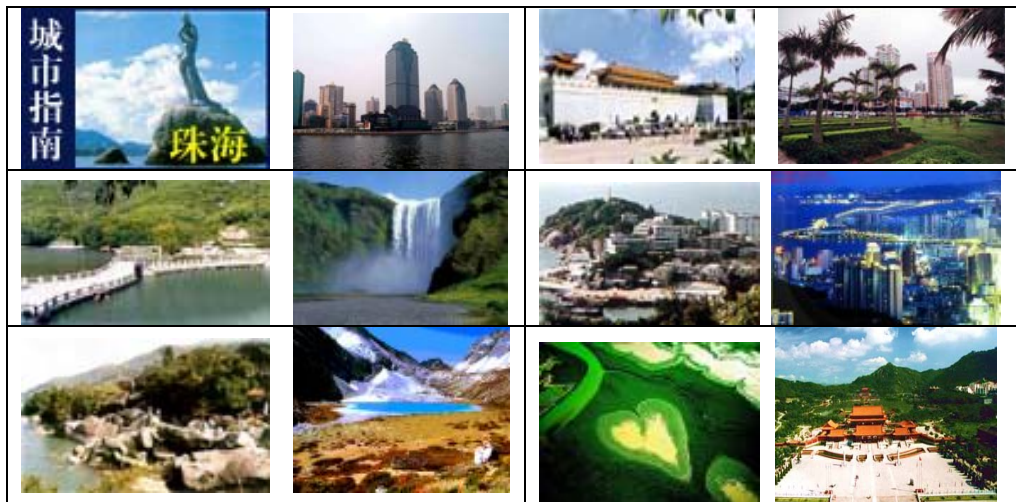
The City

About Zhuhai

Located on the west bank of the estuary of the Pearl River, Zhuhai covers 7,653 sq km. Four-fifths of the city's area is covered by sea surface. It is truly a coastal city. Zhuhai has 146 islands scattered in the vast expanse of the South China Sea, hence its nickname City of a Hundred Islands.

Zhuhai is one of the world's most romantic cities. Under clear blue skies, clear streams gently flow down its green mountains into a dreamlike seascape and a cool welcoming breeze. When you enter Zhuhai. You step into a world of beauty and romance, Romance is nature's gift to Zhuhai. Situated south of the Tropic of Cancer, with a sheltered location on the South Coast with glorious sunshine all year long With an annual average temperature of 22.4 degrees and warm tropical rains, Zhuhai is a luxurious garden paradise where colorful flowers bloom all year long.

The name Zhuhai, means "pearl Sea", and the modern city of Zhuhai sits at the mouth of the famous Pearl River where river and ocean meet. With a territory of more than 7,660 square kilometers, about 80% of which ocean, Zhuhai boasts 146 islands, many with their own secluded beaches and unspoiled scenery. These islands, like clusters of pearls, stretch out across the delta towards Zhuhai is neighboring cities of Shenzhen, Hong Kong and Macau, all within easy reach.



City Symbol In the Xianlu Bay, there is a huge sculpture named "Zhuhai fishing Girl" towering aloft on a giant jade-like rock among the blue and white waves. Made of 70 pieces of granite, the sculpture, a masterpiece of the famous sculptor Pan He, is 8.7 meters in height and 10 tons in weight. Now it is the symbol of Zhuhai.

Zhuhai: One of the First Special Economic Zones in China

The former county of Zhuhai was established in 1953, and was upgraded to a city in 1979. In 1980, it became one of the first special economic zones in China. It has under its jurisdiction three administrative districts, namely, Xiangzhou, Jinwan and Doumen, and five economic development zones, namely, the Zhuhai State-Level New-and Hi-Tech Industrial Development Zone, Zhuhai Free Trade Zone, Zhuhai Harbor Industrial Zone, Hengqin Economic Development Zone and Wanshan Marine Development Experimental Zone. It had a population of 1,233,500 in 2002. Today, Zhuhai has evolved from small border villages into a rapidly growing beautiful coastal city with modern economic development zones.

Geographical Location

Zhuhai is located at the south of Guangdong province, by the western and southern banks of the Pearl River estuary. It extends from north latitude 21 48' up to 22 27' and from east longitude 113 3' to 114 19'. Zhuhai is bordered with Macao to the south, neighbored with Hongkong across the South China Sea to the east, 140km away from Guangzhou to the north, and 36 miles away from Hongkong. It is neighbored with Jiangmen, Xinhui,

Taishan, Enping and Kaiping to the west, and Zhongshan to the east; these cities are well known for their overseas Chinese.

Weather:

Climate in Zhuhai

Sunshine and heat characterize Zhuhai's subtropical monsoon climate. 90% of the total rainfall occurs from May to October. January and February are normally the coldest months with an average temperature of 14 C , and June through August the hottest with an average of 28 C .Yearly Frost-free period: 320 days.Average annual temperature: 22 C .Annual rainfall: 1,700-2,300 mm .Yearly sunshine: 1,600-2,500 hours.Zhuhai City and local weathers:

Arrival in Zhuhai

Access to Zhuhai

Many ways are available for you to reach Zhuhai from Asian Countries or from other continents.

Via Hong Kong:

There is only one international airport in Hong Kong, called Hong Kong International Airport. Upon arrival, one can take the subway 'Airport Express' from the airport to Hong Kong Central station in 30 minutes/trip, and take a 5-minute taxi from the exit of Hong Kong Central station (designated as Airport Express) to the Hong Kong-Macao ferry terminal. The ferry terminal is located at the 3rd floor of Shun Tak Centre, Hong Kong. And then get to the Hong Kong Macao Ferry Terminal by boat (departure time: 08:40, 10:00, 12:00, 14:00, 16:00 19:30, 21:30, Fair: 26 USD) get to Zhuhai.

Via Macao:

From the Macao Airport take a taxi; get to the border at the northern tip of the peninsula. The checkpoint from Macao opens from 07:00 till midnight.

Via Guangzhou:

Approximately fifty meters away from the exit of the Baiyun Airport, a bus service is available to Gongbei, Zhuhai within 2.5 hrs (Bus fare: 80 RMB).

City Transport:

Loads of bus lines run in Zhuhai at normal service hours from 06:00 to 22:00. Zhuhai taxi (starting price RMB10) is one of the most convenient means to travel around.

Passport and Visa :

Visa information

You need a visa to enter China. Chinese embassies will only process visas in person, not by mail. If you live in the US please see below for information on how to utilize our visa service. If you wish to obtain a visa on your own, or if you don't live in the US here's a list of [Chinese embassies and consulates](#) in the US and selected countries.

Visa Requirements

China requires the following to process a visa:

- Your valid & actual passport. The passport must have at least six (6) months validity left before expiration and at least one blank page left in it.
- A complete [visa application form](#).
- One passport photo (black & white or color is acceptable).

Insurance

It is advisable that participants take out adequate travel and health insurance before leaving their countries.

HOTEL ACCOMMODATION

1. Zhuhai international Conference Center Hotel ★★★★★ (珠海国际会议中心大酒店)

Zhuhai international Conference Center Hotel is the most advanced business & conference hotel in Guangdong province, China. It located at the intersections of famous lover's Avenue and haijing Road. It is really the best choice for your business conference. Travel etc.5 minutes from Jiuzhou Port, 15 minutes from Zhuhai Gongbei Customs and 45 minutes from Zhuhai Airprt. 534 guest room and suites offer view of mounta- in/sea, satellite TV and closed-circuit TV, IDD, DDN mini-bar, electronic burglary-resisting system, laundry service, 24 hours room service, safe, refrigerator, electric heat kettle, weight balance etc, some rooms equipped with far infrared ray light wave bathroom.

Address:Middle Lover's Avenue,Jida, zhuhai, Guangdong province, China. **Postcode:** 519015.

Tel: 86 + 756 + 3329988; **Fax:** 86 + 756 + 3221966; **E-Mail:** info@cnicc.com



Reception

Congress reception desk will be ready in the lobby of Zhuhai international Conference Center Hotel for the whole

day of June 18, 2006. You can get conference booklets and meal tickets in registration. Please check in and get your room key in Hotel service desk.

2. Greenery hotel (君悦来酒店) ★★★★★

Located in downtown Zhuhai, the four-star **Greenery hotel** blends the attractions of a modern city with the tranquility of classical courtyards and offers multi-functional services ranging from accommodation,entertainment,catering to business activities.The hotel is 5 minutes distance to Jiuzhou Port and 35 minutes to airport.It faces Macao and it takes an hour to Hongkong by hydrofoil. There is 10 min walk to the Congress venue: Zhuhai international Conference Center Hotel.

Address: No.45 South Haibin road, Jida, Zhuhai, Guangdong Province, China. **Post Code:** 519015

Tel: (+86) 756-3333968; **Fax:** (+86) 756-3333968-2122

Hotel Room Rent

Rooms & Rates

The organizing committee will book room for all participants.

Hotel	Rate/ Per night	Note
Zhuhai International Conference Centre Hotel ★★★★★	65.00USD (Standard Twin)	Conference Site
Greenery hotel ★★★★★	55.00USD (Standard Twin)	

Currency and Exchange

The currency unit in China is Renminbi (RMB). Convertible foreign currency may be exchanged at the Airport, in Hotel and Banks at the current daily exchange rates (1 USD is approximately equivalent to 8.2 RMB in cash). Main credit cards can be accepted in HOTEL

Notes

1. If any one who needs to share room, please write down your roommate's name on the Registration Form.
2. The deposit will be forwarded to your hotel and deducted from the account when you check out.

Other Information

The special discount rates are only valid to the Congress. They include 10% service charges, city construction fees and buffet breakfast. Extras such as IDD (international direct dialing) and DDD (domestic direct dialing) phone calls, other meals, laundry, mini-bars, etc. are not included.

The Congress will not be responsible for room sharing arrangements.

All rooms will be booked on a first-come-first-served basis. If the rooms are not available in your chosen hotel, we will inform you as soon as possible.

All reservations should be covered by deposit while you are booking. A one-night room charge is required as the deposit.

TOURS INFORMATION

Tours reservation

To make a reservation complete the reservation form which is accessible from each tour's detail page. The deposit amount, tour price and payment due dates are indicated on each tour's detail page. You can pay by credit card or you can send us a check after submitting the form online.

Pre & Post Congress Tours

L1: Beijing (3days)

(From Guangzhou to Beijing by air) Tiananmen, Forbidden city, Great wall of badaling, Tombs of 13 Ming Emperors, Summer Palace, Temple of Heaven, Wang-fu-jing street.

Quotation: 460USD/ Person (more than five people); 520USD/Person (less than five people)

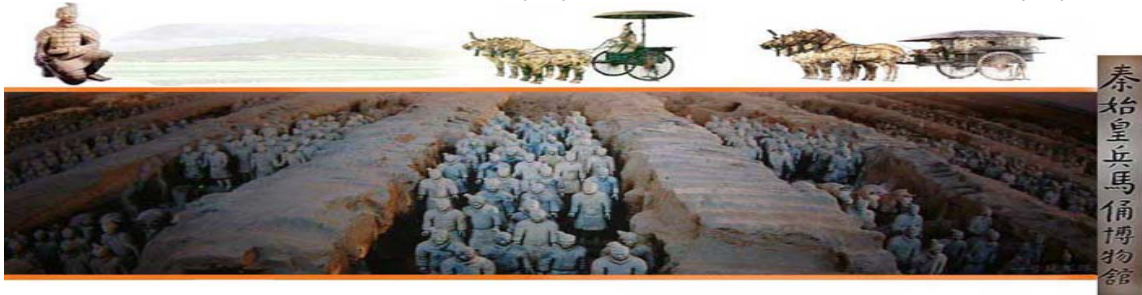


L2: Xi'an\hua mountain (5days and 4nights)

Residence:xi'an

(From Guangzhou to Xi'an by air) Bell-drum-tower ground, Terra-Cotta Figurines of Warriors and Horse, Hua-qing hot Spring, Underground palace, Qingshihuang's mausoleum, Hua-mountain tour, Big Wild Goose Pagoda, Stele Forset, The street of imitate ancient, Old city, Wall of Ming Denastry.

Quotation: 480USD/Person (more than five people); 560USD/Person (less than five people)



L3: Shanghai, Hangzhou, Suzhou (5 days and 4 nights)

(From Guangzhou to Shanghai by air) Visit the gate of Shi ku, The bund, Nanjing-street, Huang-Xian-Jiang night boating, The traditional gardens in Su zhou, Yufu temple, Hanshan temple, Lion garden, Huqiu hill, silk factory, Peak that flew over, Lingyin temple, West lake, su causeway, hua pond, liuhe pagoda, Longjing drinking. From Hangzhou to Wu town.

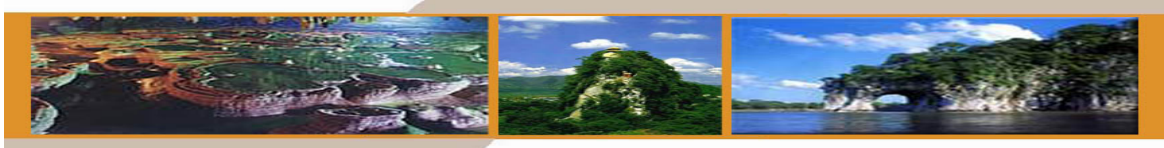
Quotation: 560USD/Person (more than five people); 620USD/Person (less than five people)



L4: Line 4: Guilin (5 days and 4 nights)

(From Guangzhou to Guilin by air) LiRiver, Elephant Trunk Hill, Seven star Garden, Fubo hill, Yangsuo-foreigner street-west street, King-city in guiling, Duxiu peak.

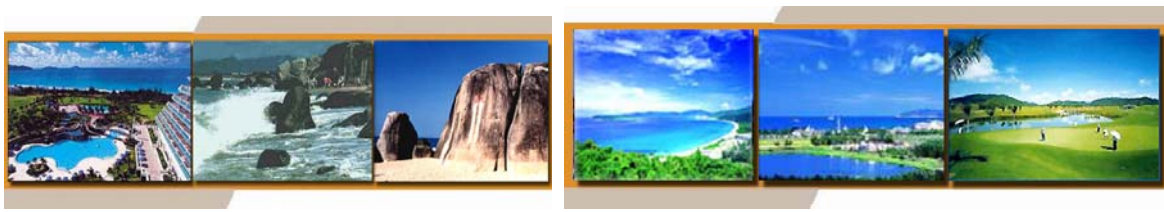
Quotation: 410USD/Person (more than five people); 480USD/Person (less than five people)



L5: Hainan island (5 days and 4 nights)

(From Zhuhai to Haikou by air), Seabeachholiday, Wanlv garden, Wanquan river, Dongshan peak, the red women army statue, Rafting at wanquan river(at you own expense), Boao, big dance program(at you own expense), Dongshan peak, Xinglong tropical zone plant garden, Big sea dive, the ends of the earth, The first gulf under heaven, The village of li and miao(at you own expense), Tea show, Ya-Long-wan under sea world, big and small cave, Lu-hui-tou-mountain garden, nanzhu, The sun and moon beach garden.

Quotation: 380USD/Person(more than five people); 420USD/Person (less than five people)



Note: The number of person must over 10 people that all tickets can beat 6 fold, if not conglobation the price will be changed.

PAYMENT

Please request the sender to instruct remitting bank to use the following payment route:
 (Choose the direct bank to reduce your charges) **USD payment:**

1. Remittance can be made through the following bank	
<p>correspondent bank: Citibank N.A., New York (SWIFT BIC: CITIUS33) beneficiary's bank: Guangdong Development Bank, H.O. (SWIFT BIC: GDBKCN22; CHIPS UID: 277028)</p> <p>Bank transfer /Account: BANK NAME: Guangdong Development Bank BJ Branch Jianguolu Sub-branch BENEFICIARY NAME: Beijing Ke Hai Zhi Bin International Conference and Exhibition Service Co., LTD A/C No.: 137 0415 1801 0008 128</p>	
2. BANK ADDRESS: BJ Branch Jianguolu Sub-branch TEL: +86-10-65559660	
No 112. Jianguolu ChaoYang District, Beijing, P. R. China. Postcode: 100022;	
3. The Registration Form should be returned to Beijing Ke Hai Zhi Bin International Conference and Exhibition Service Co., LTD for detailed information before <u>May 10, 2006</u> with appropriate payment, which should be in US dollars and payable to it by the following ways:	
<p>Address: Room 201, Building6, HuiMinYuan, TongHuiJiaYuan, SiHui East, ChaoYang District, Beijing, P. R. China. Postcode: 100025; Phone: +86-10-65582912; Fax: +86-10-65582913; Website: www.bjkhzb.com</p>	
4. You also can pay the registration fee in site by cash	
5. B. Payment On-site: Cash, travelers' check and credit cards are acceptable.	
6. NOTES	
<p>1) In order to avoid any trouble in money transfer, please do send a copy of your remittance invoice or receipt together with your Registration Form. 2) No personal check is acceptable for the payments in advance. 3) All bank charges will be borne by the participant.</p>	

CANCELLATION AND REFUND

Any change or cancellation must be notified in writing to CICCST. Refund with remittance charge deducted will be processed after the Congress. The refund policy is given below:

	Before June 1, 2006	After June 1, 2006
Registration fee	75% refund	No refund
Pre- & Post Tours	90% refund	70% refund
Hotel Deposit	Full refund	Deducted one night room rate

CORRESPONDANCE

- Any of your questions about the abstract submission, presentations program and any other scientific program:

Prof. Pingkun Zhou, M.D., Beijing Institute of Radiation Medicine, 27 Taiping Road, Beijing 100850, China
Email: zhoupk@nic.bmi.ac.cn Fax: +86-10-68183899

- Any request about visa, registration, meeting facility, hotel/tours reservation, exhibition, payment and confirmation, please contact the:

Miss Jing-Rong Peng, Beijing Ke Hai Zhi Bin International Conference and Exhibition Service Co., LTD,
Room 201, Building 6, HuiMinYuan, TongHuiJiaYuan, SiHui East, ChaoYang District, Beijing, P. R.
China. Postcode: 100025
Phone: +86-10-65582912; Fax: +86-10-65582913;
Email: khzb0526@yahoo.com.cn, liyong0526@vip.aina.com

IMPORTANT DATES

Deadline for Abstract Acceptance: April 10, 2006

Deadline for Early Registration: May 10, 2006

Deadline for Hotel, Tours Reservation: May 10, 2006

Deadline for Cancellation: June 1, 2006

Registration of the Congress: June 18-19, 2006

Opening of the Congress: June 19, 2006

THE 4TH INTERNATIONAL CONGRESS OF ASIAN SOCIETY OF TOXICOLOGY
(ASIATOX-IV)

June 18-21, 2006 Zhuhai, China

Staff use only:

Date of Rcv. _____

Reg. No. _____

Session Code _____

ABSTRACT INFORMATION FORM

Please type or write clearly in block letters and return it before **April 10, 2006** to:

Prof. Ying Chen, Beijing Institute of Radiation Medicine, 27 Taiping Road, Beijing 100850, China.

Tel: +861066930248; Fax: +861068183899

Email: chntox@yahoo.com.cn; cjpt@nic.bmi.ac.cn

Title: Prof. Dr. Mr. Mrs. Ms.

Last Name _____ First, Middle Name _____

Institution _____

Mailing Address _____

City _____ Zip Code _____ Country / Region _____

Tel _____ Fax _____ E-mail _____

Abstract Title _____

Choice of presentation: Oral Poster Either (Oral or Poster)

*Session Code: (first choice) _____ (second choice) _____

*Please refer to the session codes list on page 4-5 (Topics)

It is welcome to copy the form for colleagues who are interested in the Congress.

Date _____ Signature _____

HE 4TH INTERNATIONAL CONGRESS OF ASIAN SOCIETY OF TOXICOLOGY
(ASIATOX-IV)

June 18-21, 2006 Zhuhai, China

Registration Form

Please complete this form and return it before May 10, 2006 to:

Staff use only

Miss Jing-Rong Peng, Beijing Ke Hai Zhi Bin International Conference and Exhibition
Service Co., LTD

Registration No. _____

Address: Room 201, Building 6, HuiMinYuan, TongHuiJiaYuan, SiHui East, ChaoYang District, Beijing, P. R. China. Postcode: 100025

Phone: +86-10-65582912; Fax: +86-10-65582913. Email: khzbo526@yahoo.com.cn; liyang0526@vip.sina.com

Please type or write in block letter.

Title: Prof. Dr. Mr. Mrs. Ms.

First Name _____ Last Name _____

Nationality _____ Passport No. _____

Institution _____

Street Address _____

City _____ State _____ Zip _____ Country _____

Phone _____ Fax _____ E-mail _____

Accompanying Person' Name _____ Passport No. _____

Accompanying Person' Name _____ Passport No. _____

You would like your visa to be issued in _____ (City) _____ (Country / Region)

● **Congress Registration**

	Before May 10, 2006	After May 10, 2006	
Participant	<input type="checkbox"/> US\$350	<input type="checkbox"/> US\$400	x__ person(s)
*Student	<input type="checkbox"/> US\$180	<input type="checkbox"/> US\$200	x__ person(s)
Accompanying Person(s)	<input type="checkbox"/> US\$100	<input type="checkbox"/> US\$150	x__ person(s)

Subtotal (1) US\$ _____

Signature _____ Date _____

*Advisor Authorization:

I here by certify that the registrant is a full time student. Signature of Advisor _____

● **Hotel Reservation**

Arrival Date _____ Time _____ Flight No. _____
 Check-in Date _____ Check-out Date _____ Total Nights _____

Hotels	Double Room	Deposit / All Room Cost*
Zhuhai International Conference Centre Hotel	<input type="checkbox"/> US\$ 65	<input type="checkbox"/> Deposit only:
Tourist Hotel Zhuhai	<input type="checkbox"/> US\$ 45	<input type="checkbox"/> Deposit only:
Greenery hotel	<input type="checkbox"/> US\$ 55	<input type="checkbox"/> Deposit only:
		<input type="checkbox"/> All the room cost:
		US\$ _____ × ___ night(s) × ___ Room(s) =US\$ _____

Subtotal (2) US\$ _____

- I do not need any hotel reservation.
 I will share a double room with another participant. Name: _____

Signature _____ Date _____

● **Pre- or Post-Congress Tour Registration**

Tour line(s): _____
 Time: _____

Subtotal (3) US\$ _____

Signature _____ Date _____

Grand Total: (1)+(2)+(3) = US\$ _____

PAYMENT

Please request the sender to instruct remitting bank to use the following payment route: (Choose the direct bank to reduce your charges) **USD payment:**
Correspondent bank: Citibank N.A., New York (SWIFT BIC: CITIUS33)
Beneficiary's bank: Guangdong Development Bank, H.O.
(SWIFT BIC:GDBKCN22;CHIPS UID: 277028)
 Beneficiary name: Guangdong Development Bank BJ Branch Jianguolu Sub-branch
 Beijing Ke Hai Zhi Bin International Conference and Exhibition Service Co., LTD
 A/C No.: 137 0415 1801 0008 128